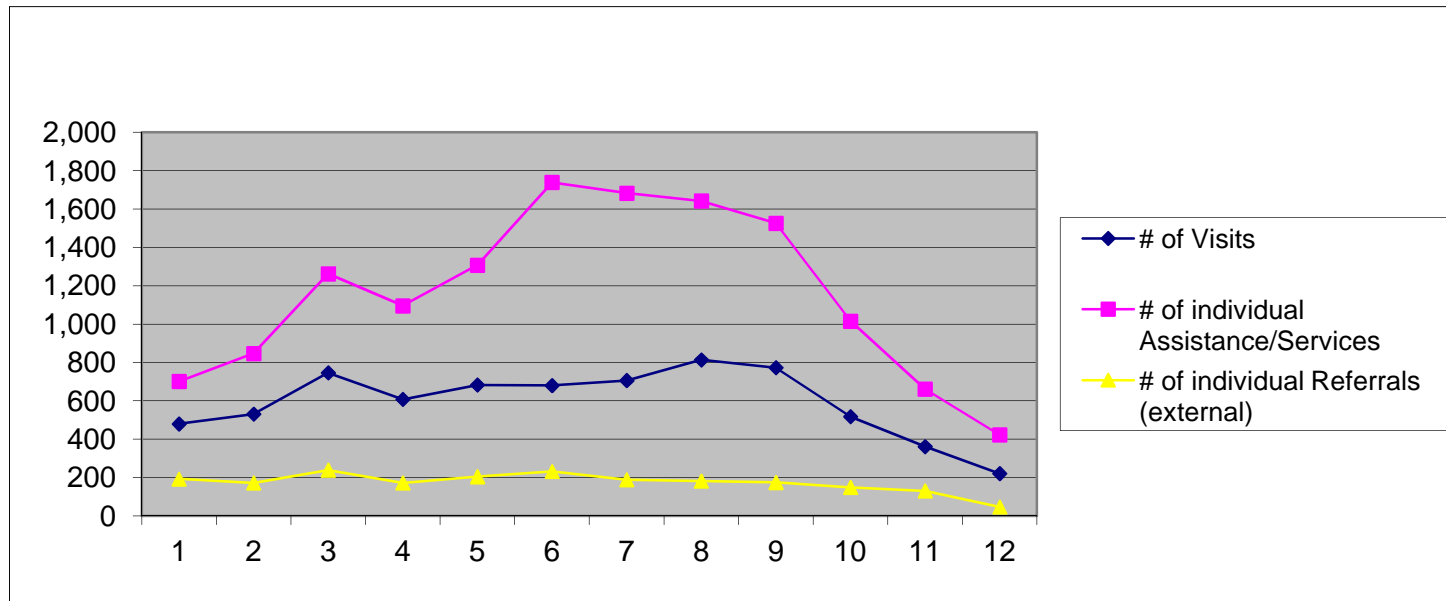




The Jesse Tree 2011 Annual Report

"Connecting, Rebuilding, Uplifting"
General Statistics by Month

	Jan.	Feb.	Mar.	Apr.	May	June	July	Aug.	Sept.	Oct.	Nov.	Dec.	Total
# of Unique Clients Seen	439	472	597	474	557	573	606	675	614	427	311	208	5,953
# of Family Members of Clients in Household	689	688	924	705	830	947	954	1,015	966	759	529	311	9,317
# of New Clients Seen	75	92	148	76	93	120	94	82	87	90	74	40	1,071
# of Visits	480	531	746	608	683	680	706	814	773	518	362	221	7,122
# of individual Assistance/Services	701	847	1,263	1,096	1,308	1,739	1,683	1,642	1,526	1,016	661	423	13,905
Total Value of Assistance Services	\$35,243	\$43,117	\$68,012	\$60,617	\$82,729	\$93,164	\$99,870	\$82,440	\$78,898	\$55,713	\$41,094	\$25,298	\$766,194
# of individual Referrals (external)	193	172	239	172	205	232	189	182	175	149	131	47	2,086
Total Estimated Value of Referrals	\$55,958	\$50,392	\$81,999	\$57,650	\$52,306	\$44,064	\$39,973	\$30,298	\$34,841	\$34,277	\$30,741	\$4,225	\$516,724



Note: SSBG funding ran out 9/30/11 so 4th Qtr numbers decreased drastically due to funding.

of Unique Clients Seen = this number represents the count of unique individuals, representing a household, who were registered as clients at The Jesse Tree and who came in during each month. These clients could have been seen more than once per month.

"A shoot will come up from the stem of Jesse; from his roots a branch will bear fruit." Isaiah (11:1)



The Jesse Tree 2011 Annual Report

"Connecting, Rebuilding, Uplifting"

Direct Assistance by Month

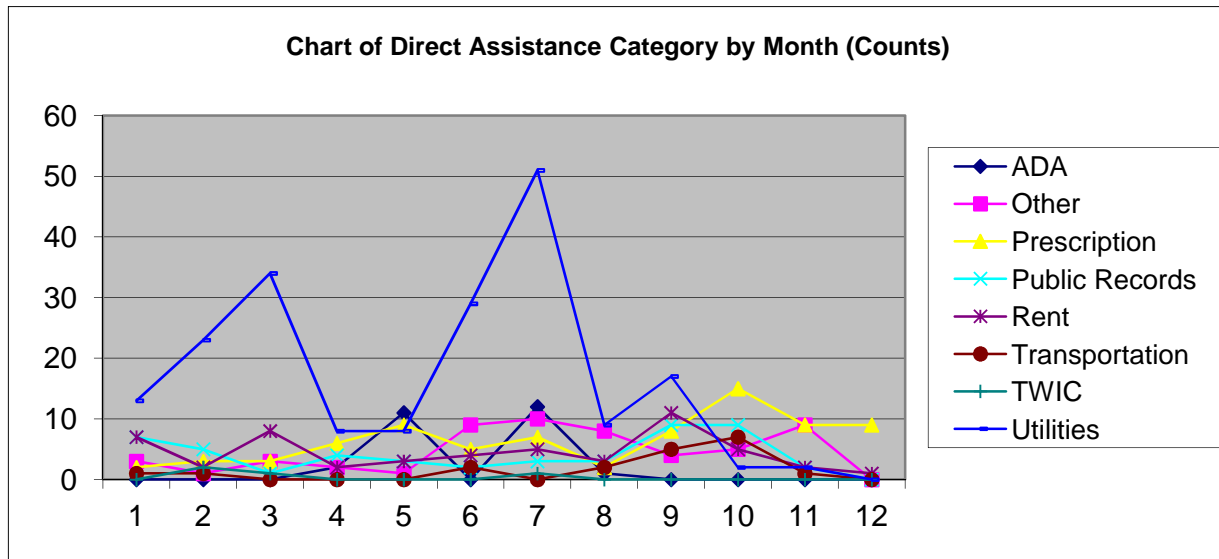
Total Count

Assistance Category	Jan.	Feb.	Mar.	Apr.	May	June	July	Aug.	Sept.	Oct.	Nov.	Dec.	Total
ADA	0	0	0	2	11	0	12	1	0	0	0	0	26
Other	3	1	3	2	1	9	10	8	4	5	9	0	55
Prescription	2	3	3	6	9	5	7	2	8	15	9	9	78
Public Records	7	5	1	4	3	2	3	3	9	9	2	0	48
Rent	7	2	8	2	3	4	5	3	11	5	2	1	53
Transportation	1	1	0	0	0	2	0	2	5	7	1	0	19
TWIC	0	2	1	0	0	0	1	0	0	0	0	0	4
Utilities	13	23	34	8	8	29	51	9	17	2	2	0	196
	33	37	50	24	35	51	89	28	54	43	25	10	479

Total Cost

Assistance Category	Jan.	Feb.	Mar.	Apr.	May	June	July	Aug.	Sept.	Oct.	Nov.	Dec.	Total
ADA	\$0	\$0	\$0	\$46	\$3,222	\$0	\$7,269	\$820	\$0	\$0	\$0	\$0	\$11,356.87
Other	\$198	\$29	\$142	\$126	\$17	\$418	\$1,339	\$1,409	\$220	\$643	\$2,322	\$0	\$6,861.98
Prescription	\$275	\$318	\$176	\$400	\$435	\$260	\$305	\$100	\$509	\$1,073	\$575	\$545	\$4,971.12
Public Records	\$818	\$296	\$34	\$75	\$50	\$31	\$74	\$55	\$176	\$169	\$32	\$0	\$1,809.50
Rent	\$850	\$150	\$650	\$400	\$150	\$700	\$550	\$350	\$2,400	\$350	\$400	\$250	\$7,200.00
Transportation	\$20	\$15	\$0	\$0	\$0	\$55	\$0	\$103	\$182	\$782	\$78	\$0	\$1,234.85
TWIC	\$0	\$265	\$133	\$0	\$0	\$0	\$60	\$0	\$0	\$0	\$0	\$0	\$457.50
Utilities	\$1,546	\$2,329	\$5,349	\$897	\$1,149	\$3,485	\$5,212	\$1,950	\$2,049	\$100	\$100	\$0	\$24,165.65
	\$3,707	\$3,401	\$6,484	\$1,944	\$5,023	\$4,950	\$14,809	\$4,787	\$5,536	\$3,117	\$3,507	\$795	\$58,057.47

Chart of Direct Assistance Category by Month (Counts)



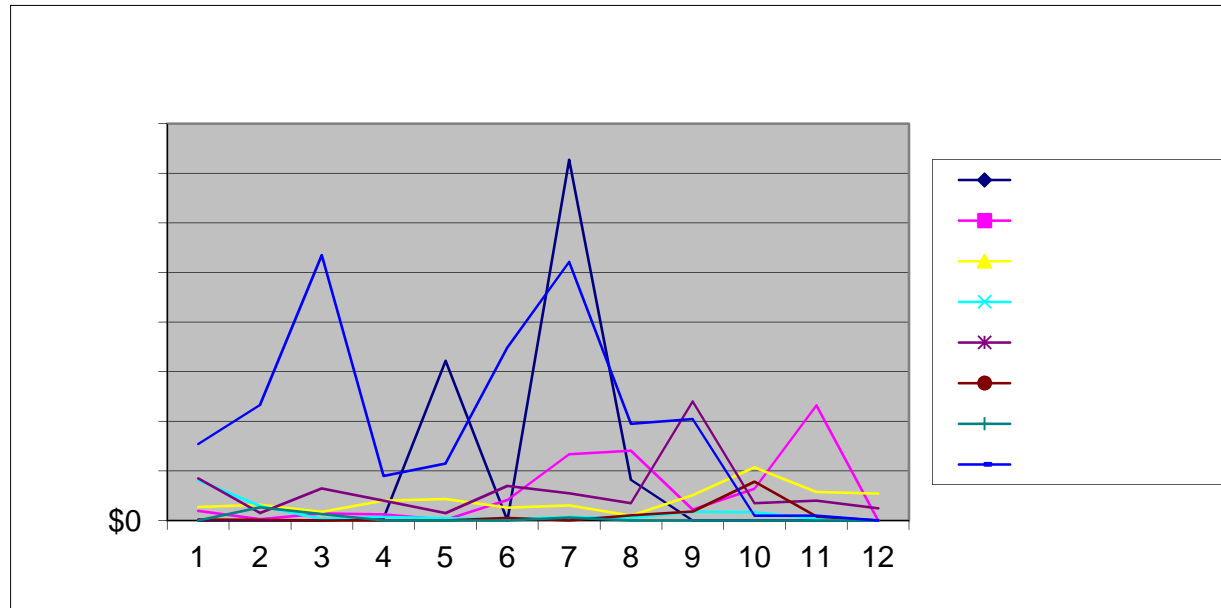
"A shoot will come up from the stem of Jesse; from his roots a branch will bear fruit." Isaiah (11:1)



The Jesse Tree 2011 Annual Report

"Connecting, Rebuilding, Uplifting"

Direct Assistance by Month





The Jesse Tree 2011 Annual Report

"Connecting, Rebuilding, Uplifting"

Assistance/Services Other than Direct Assistance by Month

Total Count

Category	Jan.	Feb.	Mar.	Apr.	May	June	July	Aug.	Sept.	Oct.	Nov.	Dec.	Total
Case Management	166	202	285	238	320	387	369	326	302	250	170	107	3,122
Chronic Conditions Mgmt	48	62	163	172	142	187	309	265	258	171	96	51	1,924
Diabetic Supplies	6	15	18	18	16	33	34	18	22	21	18	17	236
Disaster Preparedness/Relief	91	110	149	74	109	291	194	144	156	5	0	0	1,323
Health Equip Loan Prog	3	6	8	10	22	12	9	16	21	27	22	11	167
Medical Enrollment/Other	1	0	1	1	2	1	0	1	3	1	0	0	11
Nutrition	319	372	511	486	571	663	593	722	599	448	266	200	5,750
Other	1	0	1	2	1	7	4	2	4	1	1	0	24
Personal Supplies	9	21	30	25	49	54	51	101	59	22	28	12	461
Prescriptions	20	11	25	19	18	28	16	17	47	26	35	14	276
Rent	4	10	22	27	23	23	14	0	0	0	0	1	124
Transportation	0	1	0	0	0	2	1	2	2	1	0	0	9
	668	810	1,213	1,072	1,273	1,688	1,594	1,614	1,473	973	636	413	13,427

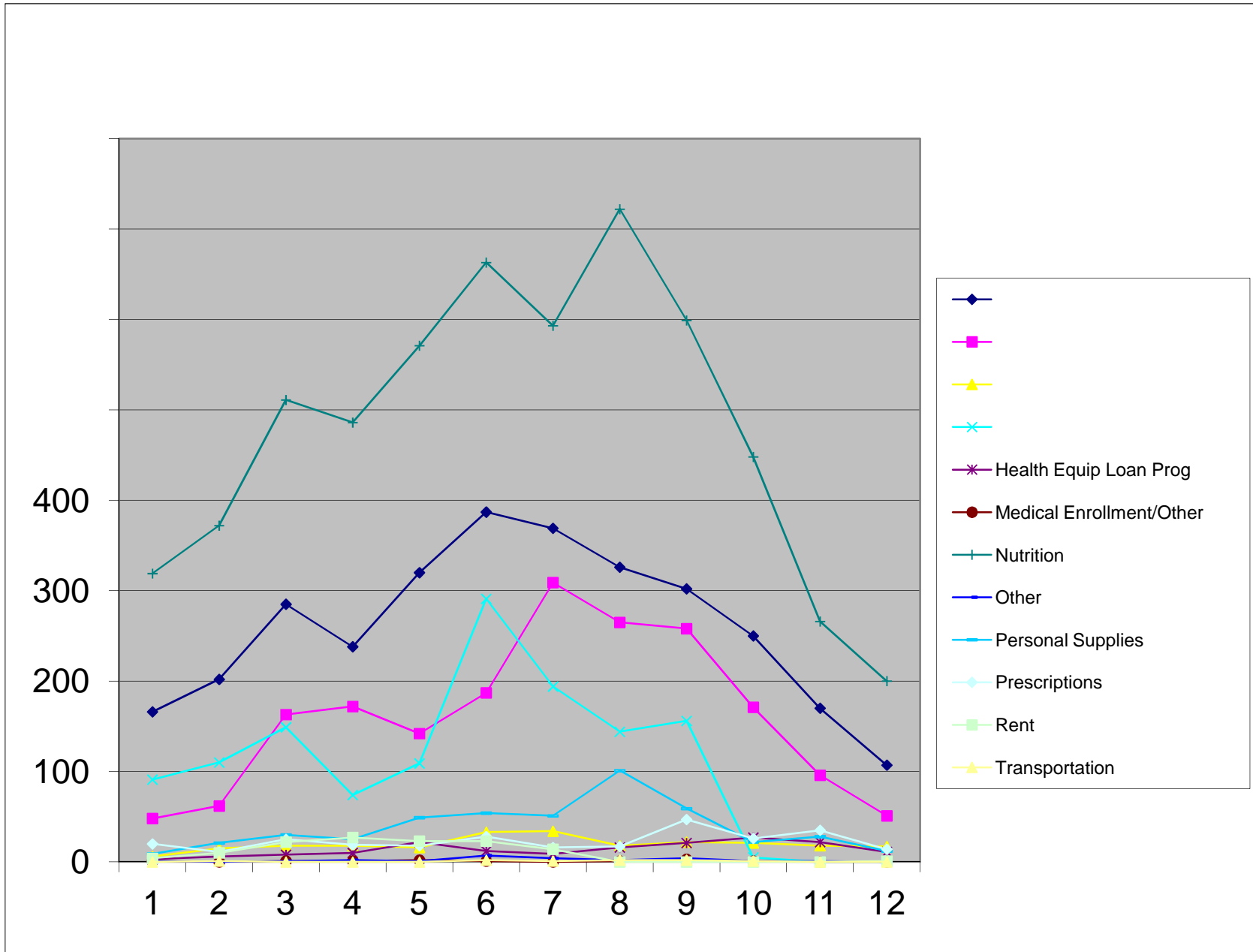
Total Cost

Category	Jan.	Feb.	Mar.	Apr.	May	June	July	Aug.	Sept.	Oct.	Nov.	Dec.	Total
Case Management	\$12,450	\$15,150	\$21,375	\$17,700	\$23,775	\$28,935	\$27,505	\$24,325	\$22,605	\$18,750	\$12,750	\$7,890	\$233,210
Chronic Conditions Mgmt	\$1,365	\$1,880	\$5,105	\$4,610	\$3,955	\$5,370	\$10,875	\$8,343	\$7,370	\$5,050	\$2,785	\$1,450	\$58,158
Diabetic Supplies	\$285	\$645	\$840	\$755	\$725	\$1,495	\$1,560	\$810	\$1,030	\$960	\$850	\$820	\$10,775
Disaster Preparedness/Relief	\$2,275	\$2,908	\$3,725	\$1,880	\$2,740	\$7,455	\$8,390	\$7,530	\$5,925	\$275	\$0	\$0	\$43,103
Health Equip Loan Prog	\$1,800	\$3,600	\$4,800	\$6,000	\$12,800	\$8,700	\$4,825	\$9,600	\$12,300	\$9,225	\$9,175	\$6,025	\$88,850
Medical Enrollment/Other	\$565	\$0	\$575	\$75	\$815	\$75	\$0	\$30	\$14	\$75	\$0	\$0	\$2,224
Nutrition	\$9,920	\$11,652	\$16,823	\$16,778	\$19,680	\$22,583	\$20,915	\$25,003	\$20,225	\$16,155	\$9,390	\$6,695	\$195,819
Other	\$5	\$0	\$5	\$30	\$5	\$32	\$20	\$30	\$55	\$5	\$20	\$0	\$207
Personal Supplies	\$110	\$210	\$693	\$576	\$720	\$905	\$874	\$1,280	\$805	\$635	\$415	\$170	\$7,393
Prescriptions	\$1,261	\$651	\$1,088	\$1,520	\$941	\$1,624	\$903	\$538	\$2,870	\$1,441	\$2,202	\$953	\$15,991
Rent	\$1,500	\$3,000	\$6,500	\$8,750	\$11,550	\$11,000	\$9,200	\$0	\$0	\$0	\$0	\$500	\$52,000
Transportation	\$0	\$20	\$0	\$0	\$0	\$40	\$20	\$164	\$164	\$25	\$0	\$0	\$433
	\$31,536	\$39,716	\$61,529	\$58,674	\$77,706	\$88,214	\$85,087	\$77,653	\$73,363	\$52,596	\$37,587	\$24,503	\$708,162

"A shoot will come up from the stem of Jesse; from his roots a branch will bear fruit." Isaiah (11:1)



The Jesse Tree 2011 Annual Report
"Connecting, Rebuilding, Uplifting"
Assistance/Services Other than Direct Assistance by Month



"A shoot will come up from the stem of Jesse; from his roots a branch will bear fruit." Isaiah (11:1)



The Jesse Tree 2011 Annual Report

"Connecting, Rebuilding, Uplifting"
Referrals (External) by Month

Total Count

Category	Jan.	Feb.	Mar.	Apr.	May	June	July	Aug.	Sept.	Oct.	Nov.	Dec.	Total
Case Management	20	24	16	4	12	24	16	13	6	1	3	1	140
Education	0	0	0	0	0	0	0	0	0	0	0	0	0
Employment	1	2	2	1	2	0	1	0	1	0	0	0	10
Family Support	0	0	0	2	2	2	0	0	1	1	1	1	10
Financial	49	67	83	26	28	40	44	36	14	20	18	6	431
Legal	9	1	4	17	12	12	10	3	11	2	1	3	85
Medical	67	39	63	65	85	85	38	65	79	81	65	15	747
Ministerial	0	0	1	1	0	0	1	0	0	0	0	0	3
Nutrition	27	5	22	21	20	20	20	12	12	5	5	4	173
Other	0	0	0	0	0	0	0	0	0	0	0	0	0
Shelter	0	3	6	3	0	2	5	2	1	0	2	0	24
Social	20	31	42	32	44	47	54	51	50	39	36	17	463
Transportation	0	0	0	0	0	0	0	0	0	0	0	0	0
	193	172	239	172	205	232	189	182	175	149	131	47	2,086

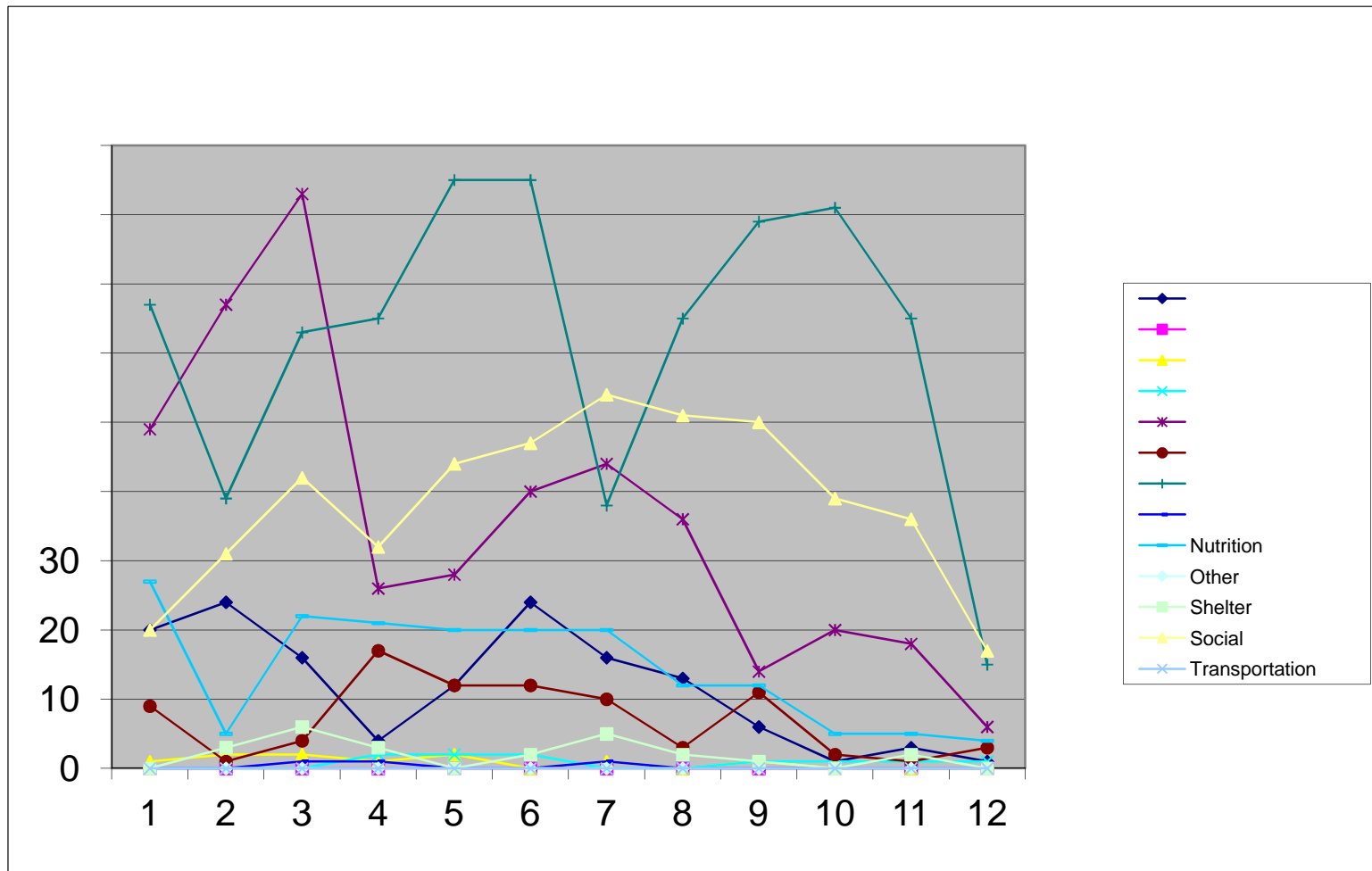
Total Cost

Category	Jan.	Feb.	Mar.	Apr.	May	June	July	Aug.	Sept.	Oct.	Nov.	Dec.	Total
Case Management	\$13,650	\$17,325	\$10,650	\$300	\$6,975	\$8,550	\$5,925	\$4,350	\$3,150	\$750	\$1,575	\$75	\$73,275
Education	\$0	\$0	\$0	\$0	\$0	\$0	\$0	\$0	\$0	\$0	\$0	\$0	\$0
Employment	\$75	\$150	\$150	\$75	\$150	\$0	\$75	\$0	\$75	\$0	\$0	\$0	\$750
Family Support	\$0	\$0	\$0	\$3,000	\$1,575	\$150	\$0	\$0	\$75	\$75	\$75	\$75	\$5,025
Financial	\$17,150	\$23,125	\$28,725	\$8,775	\$9,800	\$14,000	\$15,400	\$11,950	\$4,900	\$7,000	\$6,300	\$2,100	\$149,225
Legal	\$675	\$75	\$300	\$1,275	\$900	\$900	\$750	\$225	\$825	\$150	\$75	\$225	\$6,375
Medical	\$15,785	\$5,620	\$27,745	\$34,130	\$25,345	\$10,970	\$11,345	\$8,890	\$15,020	\$23,135	\$20,680	\$1,200	\$199,865
Ministerial	\$0	\$0	\$25	\$25	\$0	\$0	\$25	\$0	\$0	\$0	\$0	\$0	\$75
Nutrition	\$8,123	\$1,947	\$8,904	\$9,195	\$6,086	\$8,219	\$3,353	\$3,133	\$9,096	\$1,992	\$1,036	\$125	\$61,209
Other	\$0	\$0	\$0	\$0	\$0	\$0	\$0	\$0	\$0	\$0	\$0	\$0	\$0
Shelter	\$0	\$725	\$1,525	\$75	\$0	\$50	\$1,100	\$375	\$25	\$0	\$50	\$0	\$3,925
Social	\$500	\$1,425	\$3,975	\$800	\$1,475	\$1,225	\$2,000	\$1,375	\$1,675	\$1,175	\$950	\$425	\$17,000
Transportation	\$0	\$0	\$0	\$0	\$0	\$0	\$0	\$0	\$0	\$0	\$0	\$0	\$0
	\$55,958	\$50,392	\$81,999	\$57,650	\$52,306	\$44,064	\$39,973	\$30,298	\$34,841	\$34,277	\$30,741	\$4,225	\$516,724

"A shoot will come up from the stem of Jesse; from his roots a branch will bear fruit." Isaiah (11:1)



The Jesse Tree 2011 Annual Report
"Connecting, Rebuilding, Uplifting"
Referrals (External) by Month



"A shoot will come up from the stem of Jesse; from his roots a branch will bear fruit." Isaiah (11:1)



The Jesse Tree 2011 Annual Report

"Connecting, Rebuilding, Uplifting"

Classes by Month

# of Classes	Jan.	Feb.	Mar.	Apr.	May	June	July	Aug.	Sept.	Oct.	Nov.	Dec.	Total
Chronic Conditions Mgmt	2		3	6	4	3	2	2	2	2	1	2	29
Cooking/Nutrition		1	1										2
Diabetes	4	5	15	13	12	13	13	13	16	14	8	9	135
Diabetes Spanish	6	5	8	7	7	9	10	8	8	7	6	8	89
Diabetes Support Group						2			3				5
Hypertension	0				1								1
Stress	0						1	3		1			5

266

# of Attendees	Jan.	Feb.	Mar.	Apr.	May	June	July	Aug.	Sept.	Oct.	Nov.	Dec.	Total
Chronic Conditions Mgmt	5		23	29	15	32	30	12	15	15	7	10	193
Cooking/Nutrition		2	3										5
Diabetes	24	31	147	100	95	87	101	70	127	97	61	58	998
Diabetes Spanish	36	27	50	52	41	47	44	35	69	79	72	78	630
Diabetes Support Group						12			11				23
Hypertension	0				21								21
Stress	0						11	23		7			41

1911

# of Family Members per Household	Jan.	Feb.	Mar.	Apr.	May	June	July	Aug.	Sept.	Oct.	Nov.	Dec.	Total
Chronic Conditions Mgmt	8		39	49	19	52	56	20	20	21	17	14	315
Cooking/Nutrition		8	3										11
Diabetes	37	48	294	125	120	125	133	110	170	121	84	94	1461
Diabetes Spanish	81	55	114	98	88	94	119	90	181	127	168	169	1384
Diabetes Support Group						20			16				36
Hypertension	0				unk								0
Stress	0						12	28		9			49

3256



The Jesse Tree 2011 Annual Report

"Connecting, Rebuilding, Uplifting"
Food Fairs by Month

Month	# of FF	0-17	18-64	65+	Unk	#ADULT	C	B	H	A	O	Unk	Sum Eth	Sum Ages	HH
Jan.	9	1,205	1,931	440	3	2,371	629	1,104	1,658	22	8	158	3,579	3,579	1,165
Feb.	8	874	1,362	335	0	1,697	559	999	942	18	19	34	2,571	2,571	889
Mar.	10	1,640	2,415	727	2	3,142	820	1,673	1,964	32	22	273	4,784	4,784	1,646
Totals	27	3,719	5,708	1,502	5	7,210	2,008	3,776	4,564	72	49	465	10,934	10,934	3,700
Apr.	13	1,919	3,028	997	1	4,025	1,117	2,216	2,401	37	55	119	5,945	5,945	2076
May	8	1,258	1,877	582	2	2,459	711	1,562	1,293	32	7	114	3,719	3,719	1,279
June	9	1,456	2,156	566	8	2,722	783	1,609	1,670	39	33	52	4,186	4,186	1429
Totals	30	4,633	7,061	2,145	11	9,206	2,611	5,387	5,364	108	95	285	13,850	13,850	4,784
July	8	1,098	1,740	586	2	2,326	573	1,160	1,418	38	0	237	3,426	3,426	1,230
Aug.	7	1,227	1,641	588	5	2,229	509	1,425	1,469	4	54	0	3,461	3,461	1,172
Sept.	12	1,746	2,869	950	3	3,819	1,088	2,023	2,376	37	21	23	5,568	5,568	2,086
Totals	27	4,071	6,250	2,124	10	8,374	2,170	4,608	5,263	79	75	260	12,455	12,455	4,488
Oct.	11	1,353	2,033	614	6	2,647	828	1,376	1,692	43	5	62	4,006	4,006	1,423
Nov.	7	1,300	1,891	472	2	2,363	543	1,270	1,789	16	47	0	3,665	3,665	1,227
Dec.	7	1,105	1,512	395	13	1,907	404	1,125	1,350	30	115	1	3,025	3,025	976
Totals	25	3,758	5,436	1,481	21	6,917	1,775	3,771	4,831	89	167	63	10,696	10,696	3,626
	109	16,181	24,455	7,252	47	31,707	8,564	17,542	20,022	348	386	1,073	47,935	47,935	16,598

"A shoot will come up from the stem of Jesse; from his roots a branch will bear fruit." Isaiah (11:1)



The Jesse Tree 2011 Annual Report

"Connecting, Rebuilding, Uplifting"

Pantry by Month

Month	0-17	18-64	65+	Unk	#ADULT	C	B	H	A	O	Unk	Sum Eth	Sum Ages	HH
Jan.	52	118	6	0	124	47	64	62	2	1	0	176	176	82
Feb.	35	188	2	0	190	86	79	52	0	0	8	225	225	105
Mar.	171	286	12	0	298	164	145	122	2	0	36	469	469	181
Totals	258	592	20	0	612	297	288	236	4	1	44	870	870	368
Apr.	115	279	4	1	283	148	136	57	0	1	57	399	399	183
May	198	385	10	1	395	250	202	142	0	0	0	594	594	257
June	313	568	25	4	593	266	278	285	1	76	4	910	910	361
Totals	626	1,232	39	6	1,271	664	616	484	1	77	61	1,903	1,903	801
July	252	485	26	0	509	271	297	131	0	64	0	763	763	319
Aug.	305	626	15	4	641	332	375	200	0	43	0	950	950	407
Sept.	162	307	6	0	313	139	154	171	0	3	8	475	475	194
Totals	719	1,418	47	4	1,463	742	826	502	0	110	8	2,188	2,188	920
Oct.	148	275	4	1	279	154	180	70	3	0	21	428	428	176
Nov.	44	79	5	0	84	53	46	29	0	0	0	128	128	46
Dec.	311	492	64	0	556	115	340	266	7	0	139	867	867	297
Totals	503	846	73	1	919	322	566	365	10	0	160	1,423	1,423	519
	2,106	4,088	179	11	4,265	2,025	2,296	1,587	15	188	273	6,384	6,384	2,608



The Jesse Tree 2011 Annual Report

"Connecting, Rebuilding, Uplifting"
Senior Food Boxes by Month

Month	0-17	18-64	65+	Unk	#ADULT	C	B	H	A	O	Unk	Sum Eth	Sum Ages	HH
Jan.	0	48	83	0	131	43	67	17	1	1	2	131	131	130
Feb.	2	66	114	0	180	63	78	30	1	1	9	182	182	180
Mar.	0	55	89	0	144	54	56	21	3	0	10	144	144	140
Totals	2	169	286	0	455	160	201	68	5	2	21	457	457	450
Apr.	0	56	106	0	162	54	69	30	7	0	2	162	162	156
May	0	62	117	0	179	61	77	34	6	1	0	179	179	175
June	0	66	115	0	181	71	76	26	6	1	1	181	181	178
Totals	0	184	338	0	522	186	222	90	19	2	3	522	522	509
July	0	64	117	0	181	71	74	29	5	2	0	181	181	177
Aug.	1	72	125	0	197	77	77	34	6	3	1	198	198	195
Sept.	0	76	124	0	200	72	83	34	6	3	2	200	200	198
Totals	1	212	366	0	578	220	234	97	17	8	3	579	579	570
Oct.	1	84	150	0	234	84	99	41	6	3	2	235	235	228
Nov.	0	54	98	0	152	52	66	24	6	2	2	152	152	150
Dec.	0	82	148	1	230	82	98	41	6	1	3	231	231	228
Totals	1	220	396	1	616	218	263	106	18	6	7	618	618	606
	4	785	1,386	1	2,171	784	920	361	59	18	34	2,176	2,176	2,135



The Jesse Tree 2011 Annual Report

"Connecting, Rebuilding, Uplifting"

Hospitality & Snack Pack by Month

Hospitality

Month	0-17	18-64	65+	Unk	#ADULT	C	B	H	A	O	Unk	Sum Eth	Sum Ages	HH
Jan.	0	1	0	0	1	1	0	0	0	0	0	1	1	1
Feb.	2	7	0	0	7	5	0	3	0	0	1	9	9	5
Mar.	0	0	0	0	0	0	0	0	0	0	0	0	0	0
Totals	2	8	0	0	8	6	0	3	0	0	1	10	10	6
Apr.	0	0	0	0	0	0	0	0	0	0	0	0	0	0
May	0	0	0	0	0	0	0	0	0	0	0	0	0	0
June	0	0	0	0	0	0	0	0	0	0	0	0	0	0
Totals	0	0	0	0	0	0	0	0	0	0	0	0	0	0
July	0	0	0	0	0	0	0	0	0	0	0	0	0	0
Aug.	0	0	0	0	0	0	0	0	0	0	0	0	0	0
Sept.	0	0	0	0	0	0	0	0	0	0	0	0	0	0
Totals	0	0	0	0	0	0	0	0	0	0	0	0	0	0
Oct.	0	0	0	0	0	0	0	0	0	0	0	0	0	0
Nov.	0	0	0	0	0	0	0	0	0	0	0	0	0	0
Dec.	0	0	0	0	0	0	0	0	0	0	0	0	0	0
Totals	0	0	0	0	0	0	0	0	0	0	0	0	0	0
	2	8	0	0	8	6	0	3	0	0	1	10	10	6



The Jesse Tree 2011 Annual Report

"Connecting, Rebuilding, Uplifting"
Hospitality & Snack Pack by Month

Snack Pack

Month	0-17	18-64	65+	Unk	#ADULT	C	B	H	A	O	Unk	Sum Eth	Sum Ages	HH
Jan.	0	0	0	0	0	0	0	0	0	0	0	0	0	0
Feb.	2	3	0	0	3	4	0	0	0	0	1	5	5	3
Mar.	0	0	0	0	0	0	0	0	0	0	0	0	0	0
Totals	2	3	0	0	3	4	0	0	0	0	1	5	5	3
Apr.	0	0	0	0	0	0	0	0	0	0	0	0	0	0
May	0	0	0	0	0	0	0	0	0	0	0	0	0	0
June	0	0	0	0	0	0	0	0	0	0	0	0	0	0
Totals	0	0	0	0	0	0	0	0	0	0	0	0	0	0
July	0	0	0	0	0	0	0	0	0	0	0	0	0	0
Aug.	0	0	0	0	0	0	0	0	0	0	0	0	0	0
Sept.	0	0	0	0	0	0	0	0	0	0	0	0	0	0
Totals	0	0	0	0	0	0	0	0	0	0	0	0	0	0
Oct.	0	0	0	0	0	0	0	0	0	0	0	0	0	0
Nov.	0	0	0	0	0	0	0	0	0	0	0	0	0	0
Dec.	0	0	0	0	0	0	0	0	0	0	0	0	0	0
Totals	0	0	0	0	0	0	0	0	0	0	0	0	0	0
	2	3	0	0	3	4	0	0	0	0	1	5	5	3